

Fastec HiSpec 2

Innovative Low-Light High-Speed Camera

Fast Facts

- Excellent Light Sensitivity: 3,200 ISO monochrome, 1,600 ISO color.
- Outstanding Image Quality: Up to 506 frames per second at 1280 x 1024 resolution.
- Extremely Fast: Adjustable frame rate up to 112,000 frames per second.
- Well Connected: GiGE compatible for easy remote camera control.
- Fits Anywhere: Only 69mm H x 93mm W x 92mm D, C-Mount and .9 kg.
- GiGE Vision: Industry control interface protocol standard. 



Forget About Bright Lights

Until now, lighting has sometimes been a challenge with high-speed imaging. No more! The photo-sensitivity of the HiSpec 2 enables high-speed recordings at 1.3 megapixels under normal lighting conditions.

Optional ImageBLITZ® Auto Trigger

Now it's easy to capture those elusive random events. Simply define a "region of interest" in the field of view and let the ImageBLITZ® trigger take over. Any change in the pre-set image area will stop the recording and save the event sequence. No special hardware or intrusive wiring is required.

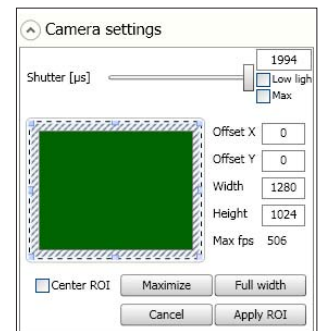
Optional Hi-G Configuration

The HiSpec 2 has been certified to 100 "G" accelerations making it the ideal combination of ruggedness with small size. Fits into tight spaces for on-board automotive impact testing, military ordinance testing and other harsh environments. The built-in battery operates in three modes:

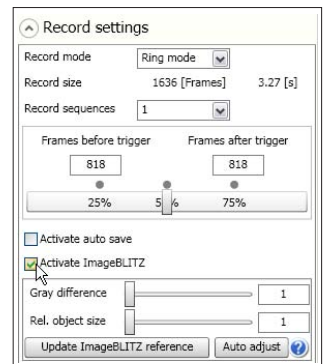
- Ensures fail-safe operation in the event of a power loss
- Allows "untethered" operation for up to 1 hour
- Has image retention mode of up to 24 hours

Use it Everywhere

The HiSpec 2's Gigabit Ethernet interface allows the user to operate multiple cameras from any standard Notebook / PC up to a distance of 100 meters. The HiSpec 2 is designed for easy operation in virtually any industrial or laboratory environment.



Easy to use
Camera Control Software



ImageBLITZ® Auto Trigger
feature based on selectable
region of interest

See what you've been missing



Fastec HiSpec 2

Innovative Low-Light High-Speed Camera

CAMERA SPECIFICATIONS

SYSTEM DESIGN	Scaleable and network-compatible with standard and/or notebook PCs. Synchronous processing of multiple cameras
SENSOR	CMOS sensor, 1280 x 1024 pixels, 10-bit monochrome or RGB color with BAYER filter. Active pixel area 22.9mm diagonal
PIXEL SIZE	14 x 14 μ m
LIGHT SENSITIVITY	3,200 ISO monochrome, 1,600 ISO color
SPECTRAL BANDWIDTH	400 - 900 nm
RECORDING RATE	Up to 506 fps at full resolution, up to 112,183 fps at reduced resolution
MEMORY	4GB standard. Optional upgrade to 8GB
RECORDING TIME	6.4 seconds at full resolution. Longer record times with variable resolution and frame rates
SHUTTER	Global electronic shutter from 2 μ sec to 1 second in 2 μ sec steps
LENS MOUNT	C-Mount or F-Mount
FRAME FORMAT	BMP, TIF, DNG, JPG or AVI file format
CAMERA/PC INTERFACE	1000/100 Ethernet interface (Gigabit Ethernet)
PHASE LOCK	Multiple cameras can be synchronized to a master camera or to an external source such as optional IRIG-B
TRIGGER	Contact closure, external TTL signal or optional ImageBLITZ® Auto Trigger software
CAMERA SIZE	69mm H x 93mm W x 93mm D with C-Mount. 63mm H x 93mm W x 128mm D with F-Mount
CAMERA WEIGHT	.9 kg. without lens
OPERATING ENVIRONMENT	+ 5° to + 45°C
POWER SUPPLY	10 - 30V DC external power supply
POWER CONSUMPTION	15W maximum

SOFTWARE SPECIFICATIONS

CAMERA CONTROL SOFTWARE	HiSpec Director 2 software for Windows 7/Vista/XP
IMAGE AMPLIFICATION	Digital gain from 1 – 4 in 8 steps
OPTIONAL SDK	GiGE Vision compatible 

OPTIONS AVAILABLE

MEMORY	8GB
AUTO TRIGGER	ImageBLITZ® Software – Auto Trigger
MULTI-SEQUENCE MODE	2, 4, 8 or 16 individual recording partitions
IRIG-B	Range timing standard
HI-G CERTIFIED	Certified for shock to 100g for 20ms, vibration to 10g
F-MOUNT ADAPTER	Convert from C-Mount lenses to F-Mount lenses

TYPICAL RESOLUTIONS & FRAME RATES

Maximum Frame Rate	Resolution	4GB STANDARD		8GB OPTION	
		Recording Time @ Max Frame Rate	Total Frames	Recording Time @ Max Frame Rate	Total Frames
506 fps	1280 x 1024	6.5 sec.	3,274	12.9 sec.	6,550
718 fps	1280 x 720	6.5 sec.	4,656	13.0 sec.	9,317
1,008 fps	1280 x 512	6.5 sec.	6,548	13.0 sec.	13,103
1,319 fps	768 x 600	7.1 sec.	9,313	14.1 sec.	18,635
2,312 fps	480 x 480	8.1 sec.	18,627	16.1 sec.	37,271
5,672 fps	320 x 240	9.9 sec.	55,879	19.7 sec.	111,813
13,540 fps	144 x 144	15.3 sec.	206,967	30.6 sec.	414,125
112,183 fps	128 x 2	149.4 sec.	16,760,140	300 sec.	33,654,900

17150 Via Del Campo, Suite 301, San Diego, CA 92127
Tel 858.592.2342 Fax 858.592.2615 www.fastecimaging.com

Specifications subject to change without notice.
ImageBLITZ® is a trademark of Mikrotrotron GmbH.

